

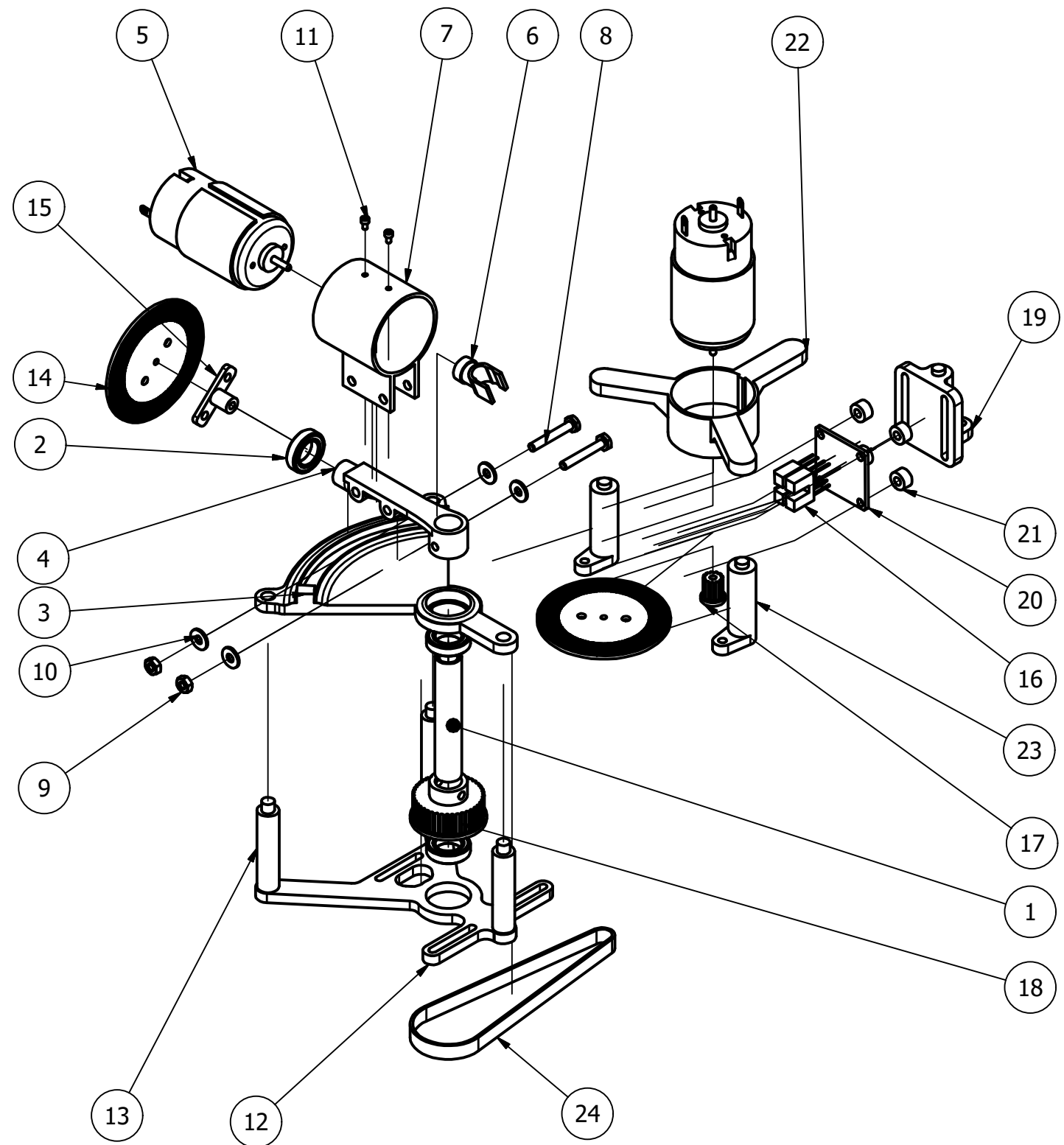
ELEC 391

# TEAM B1

# CONTROLLER

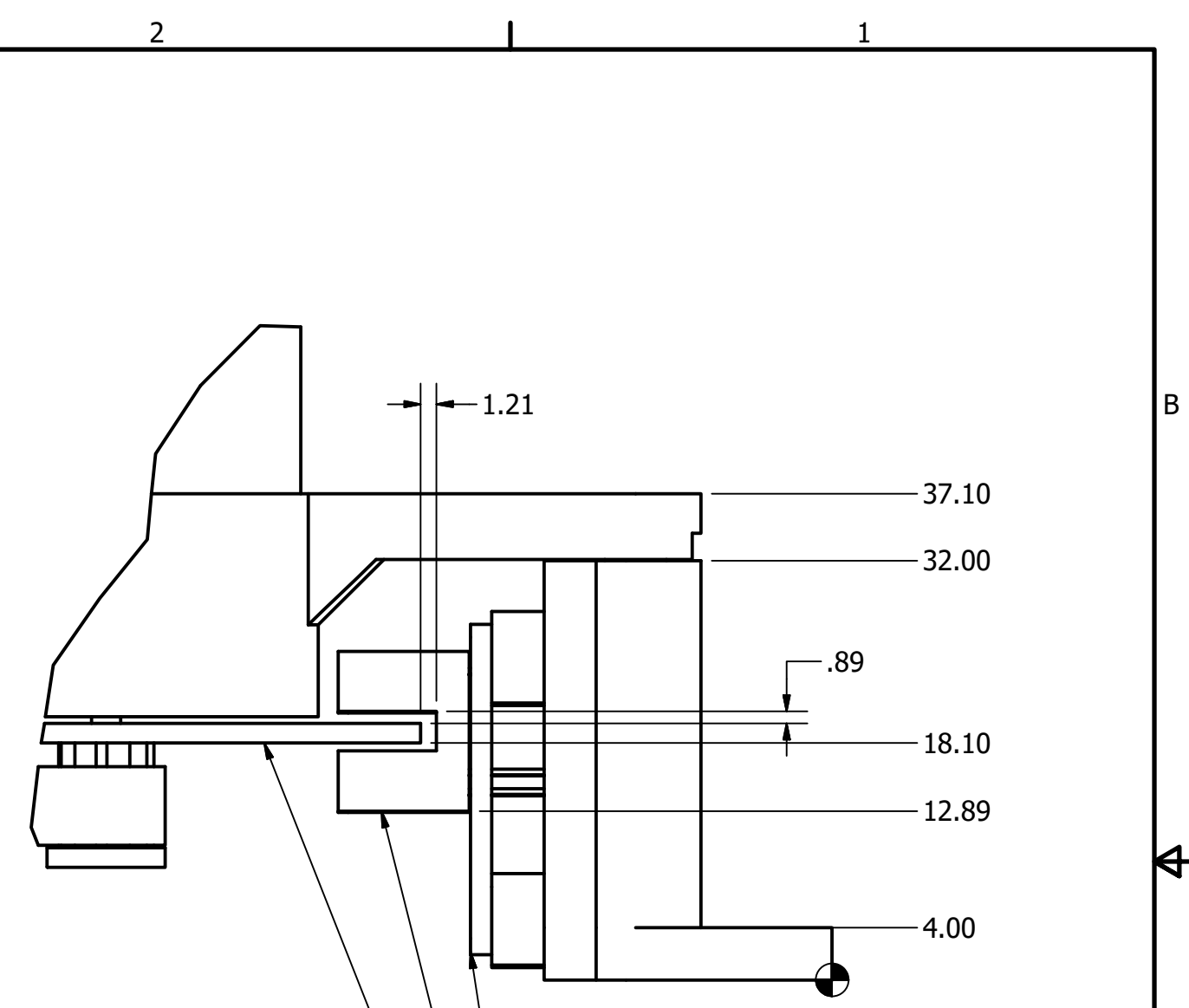
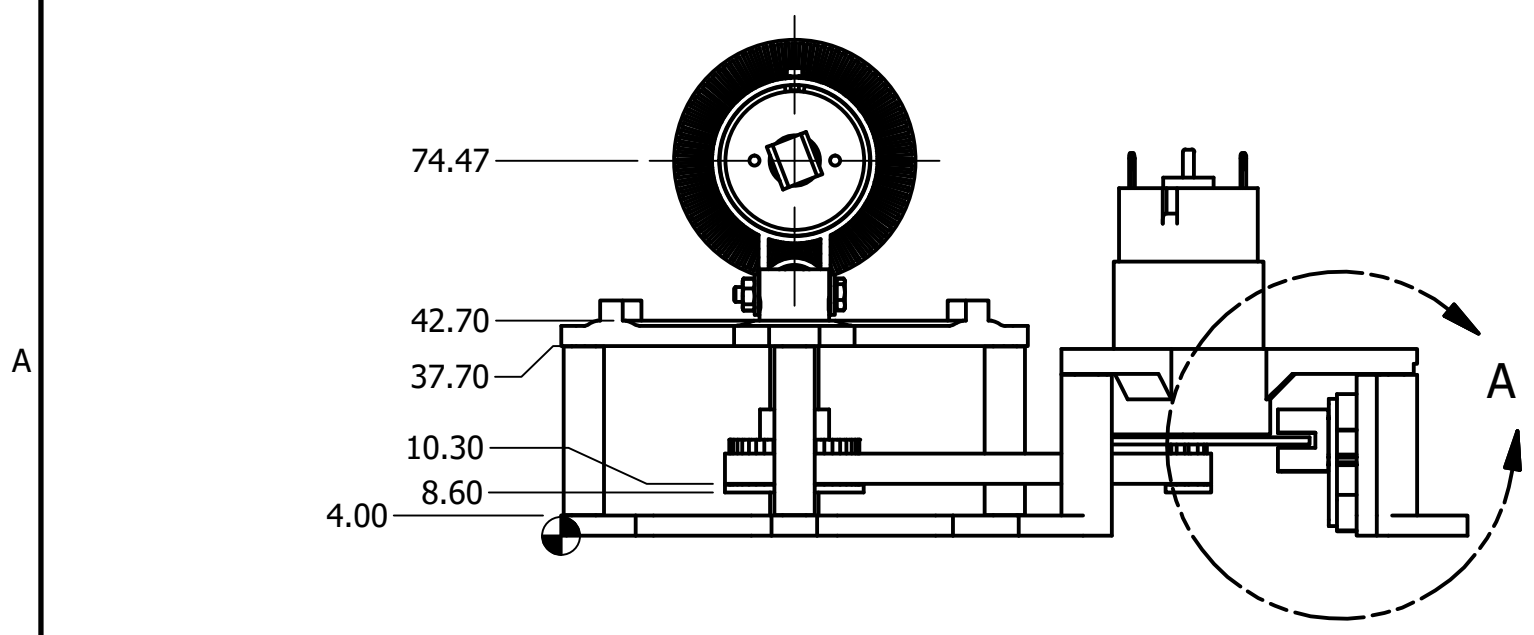
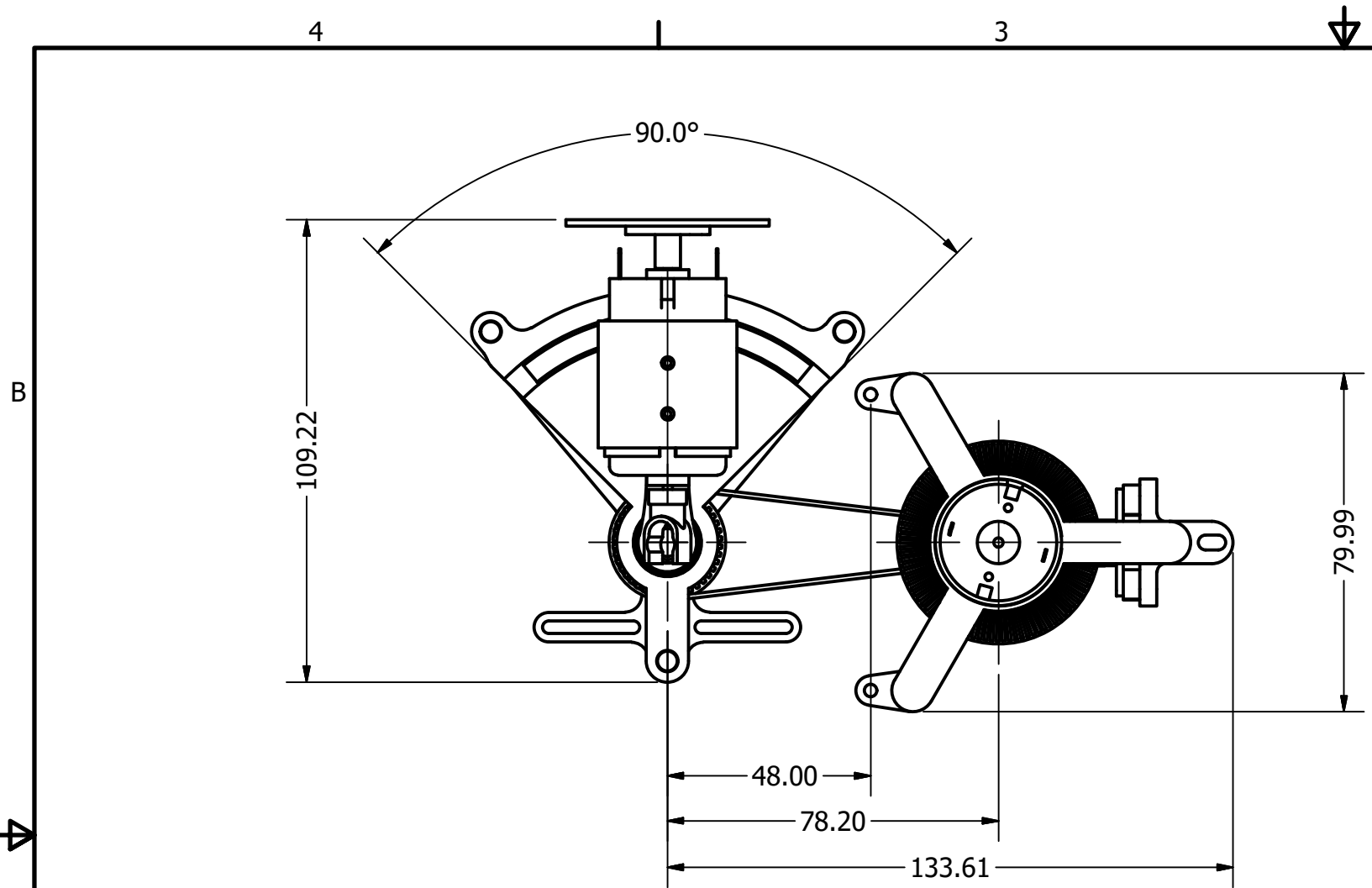
ALL DIMENSIONS IN MM

ELEC 391		TITLE	
B1 CONTROLLER		Overview	
DRAWN BY	SIZE	DWG NO	REV
MUCHEN HE	B	Demo2 Drawings	
2018-02-12	SCALE	1:1	SHEET 1 OF 4



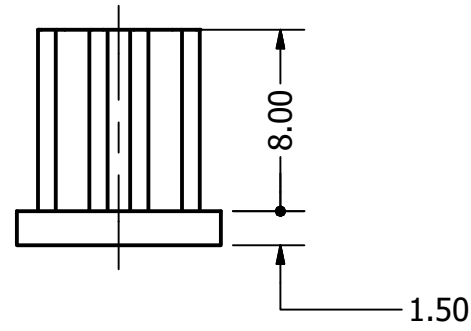
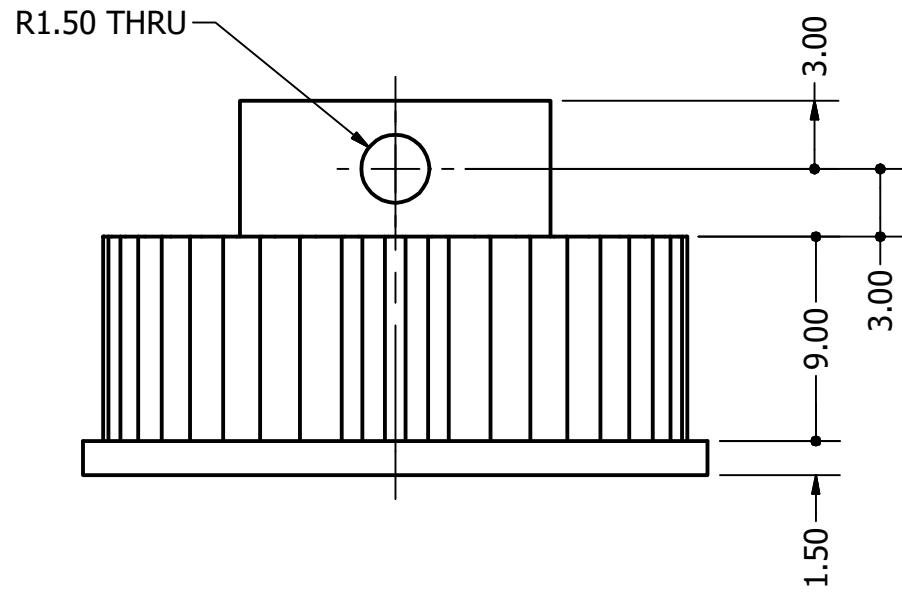
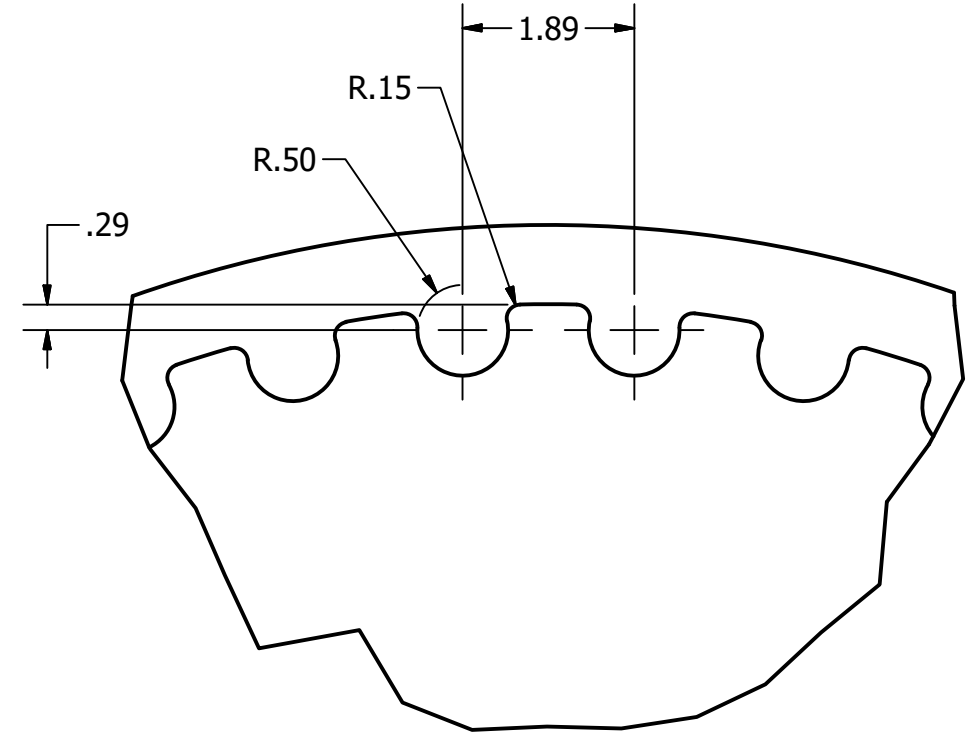
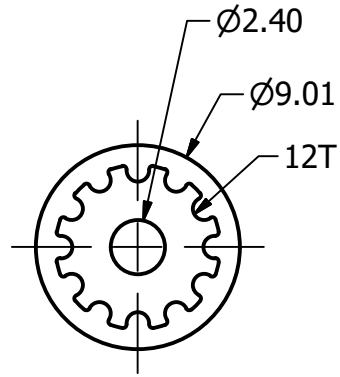
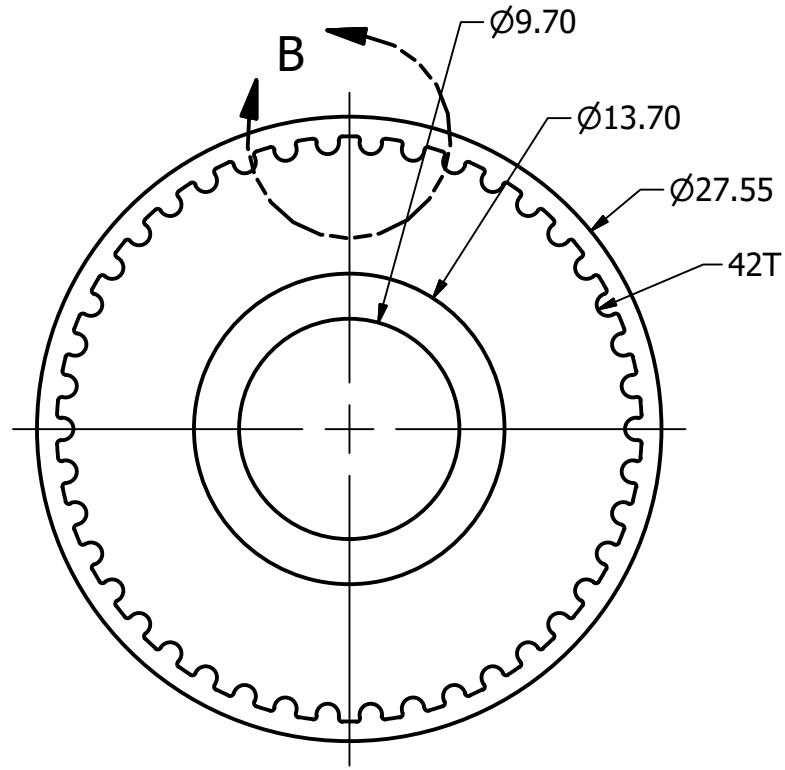
PARTS LIST			
ITEM	QTY	PART NUMBER	DESCRIPTION
1	1	Rod 3-8in	
2	3	R1038_ZZ_W Bearing	Medium sized bearing
3	1	Yaw Platform Top	
4	1	Pok Header Mount	
5	2	JD5B-2655W-R	Off the shelf motor
6	1	Laser Mount	
7	1	Pok Default Pitch Motor Mount	
8	2	AS 1110 - M3 x 20	ISO metric hexagon precision bolts and screws
9	2	AS 1112 - M3 Type 5	ISO metric hexagon nuts, including thin nuts, slotted nuts and castle nuts
10	4	CNS 5050 - A - 3.2	Washer
11	2	ANSI B18.3.1M - M1.6x0.35 x 3	Broached Socket Head Cap Screw - Metric
12	1	Pok Mk3 Base	
13	3	Pok Mk3 Support	
14	2	Encoder Wheel (G16)	
15	1	Shaft Encoder Adapter	Encoder Wheel Mount
16	2	GP1A52HRJ00F (Large slot detector)	Large Slot Detector
17	1	GT2 Gear Pinion	
18	1	GT2 Gear Big	
19	1	Pok Mk3 Yaw Motor Support	
20	1	Large Encoder PCB	
21	4	Nylon M3 4mm Spacer	
22	1	Pok Mk3 Yaw Motor Mount Mk2	
23	2	Pok Mk3 Yaw Motor Support Min	
24	1	Belt	

ELEC 391		TITLE	
B1 CONTROLLER		Exploded	
DRAWN BY	SIZE	DWG NO	REV
MUCHEN HE	B	Demo2 Drawings	
2018-02-12	SCALE	1:2	SHEET 2 OF 4



ELEC 391		TITLE	
B1 CONTROLLER		Assembly Detail	
DRAWN BY	SIZE	DWG NO	REV
MUCHEN HE	B	Demo2 Drawings	
2018-02-12	SCALE	1:1.5	SHEET 3 OF 4

4 3 2 1



DETAIL B  
SCALE 12:1

TIMING BELT GEAR (DRIVEN)

TIMING BELT PINION GEAR (DRIVING)

B

B

A

A

4 3 2 1

ELEC 391		TITLE		
B1 CONTROLLER		Belt Gear Profiles		
DRAWN BY MUCHEN HE		SIZE B	DWG NO Demo2 Drawings	REV
2018-02-13		SCALE 3:1	SHEET 4 OF 4	